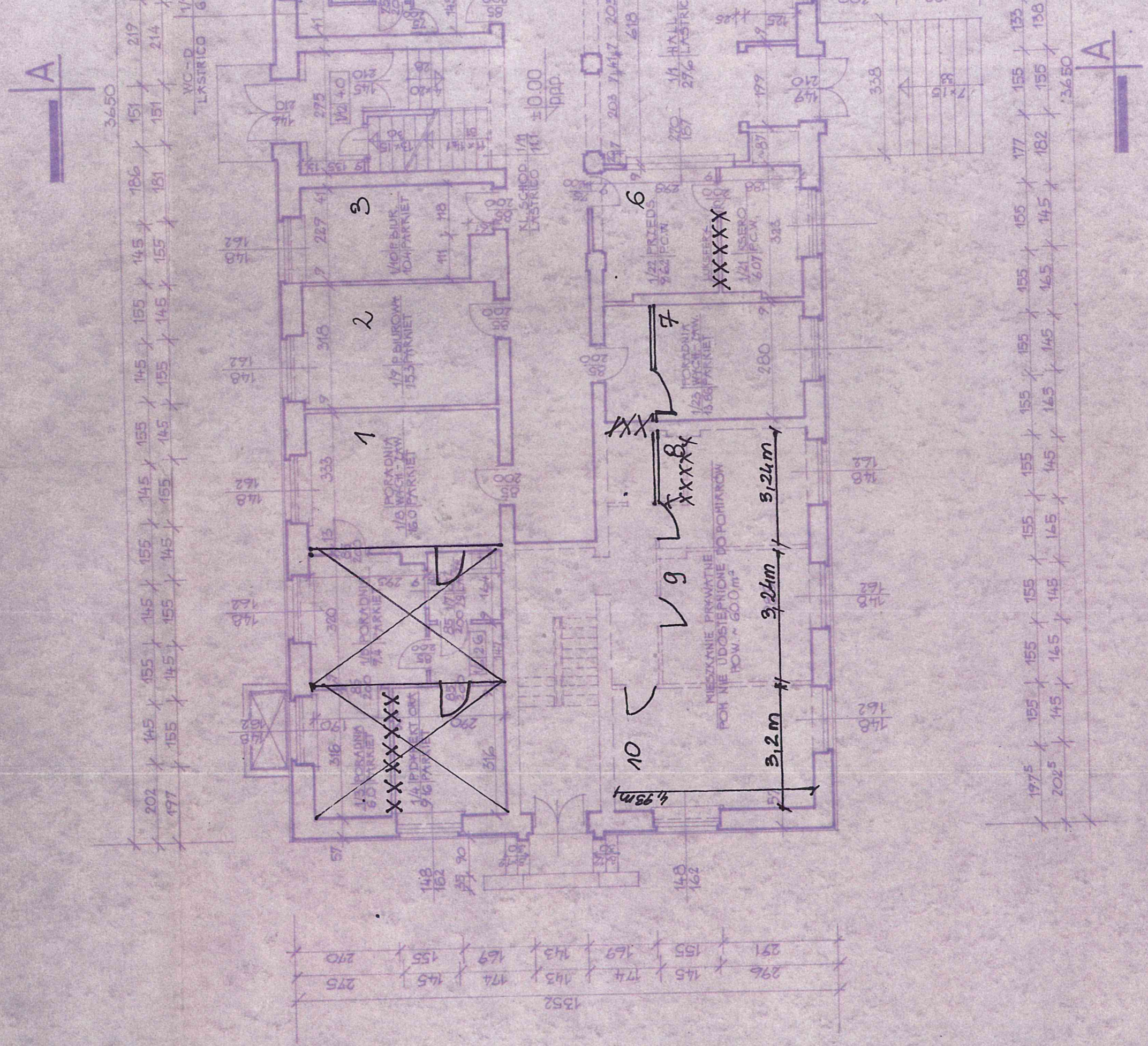


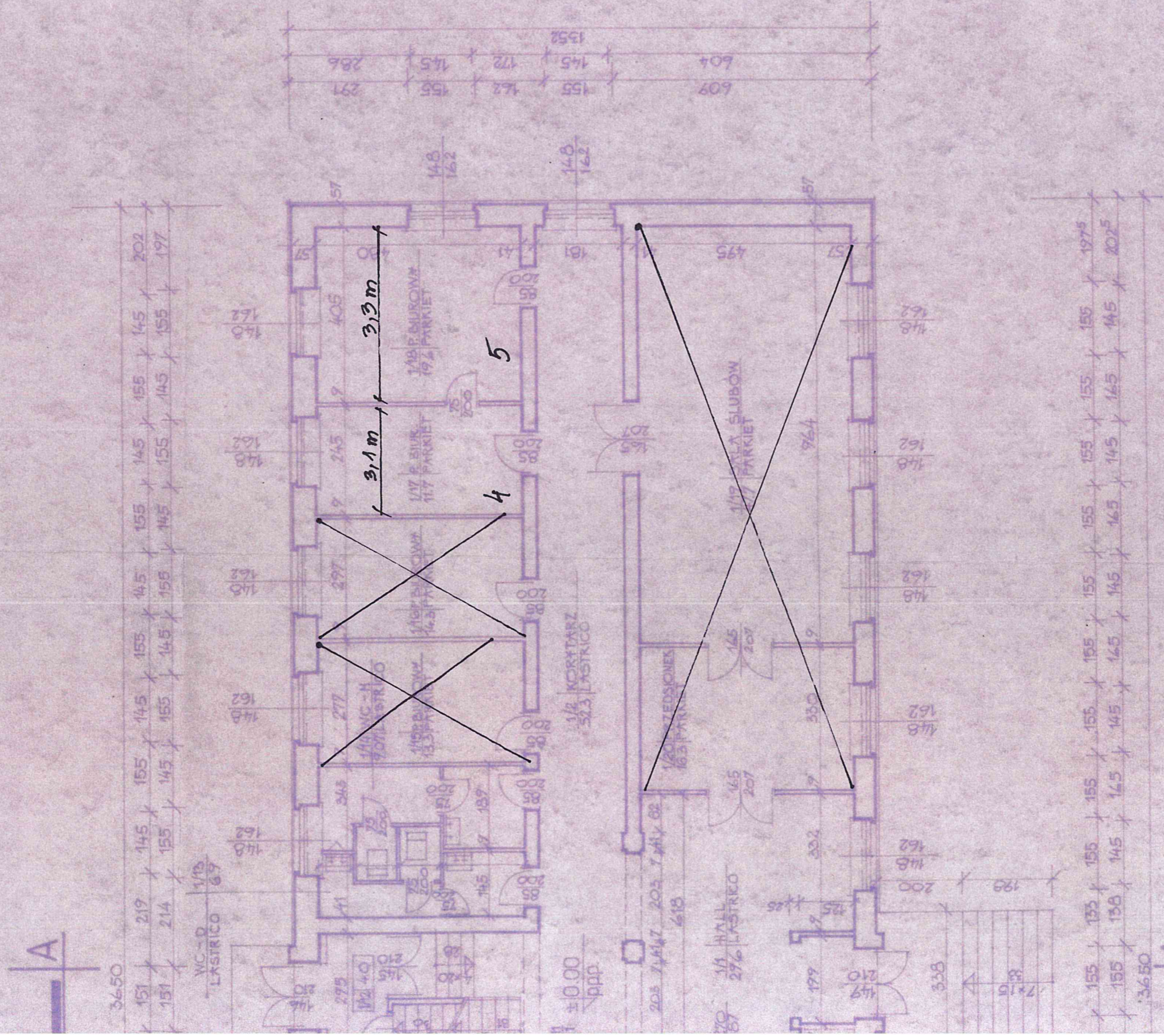
$h = 2,70m \pm 5\text{ cm}$



RZUT PARTERU
POW. UŻYTKOWA 397.21 m²

PARTER

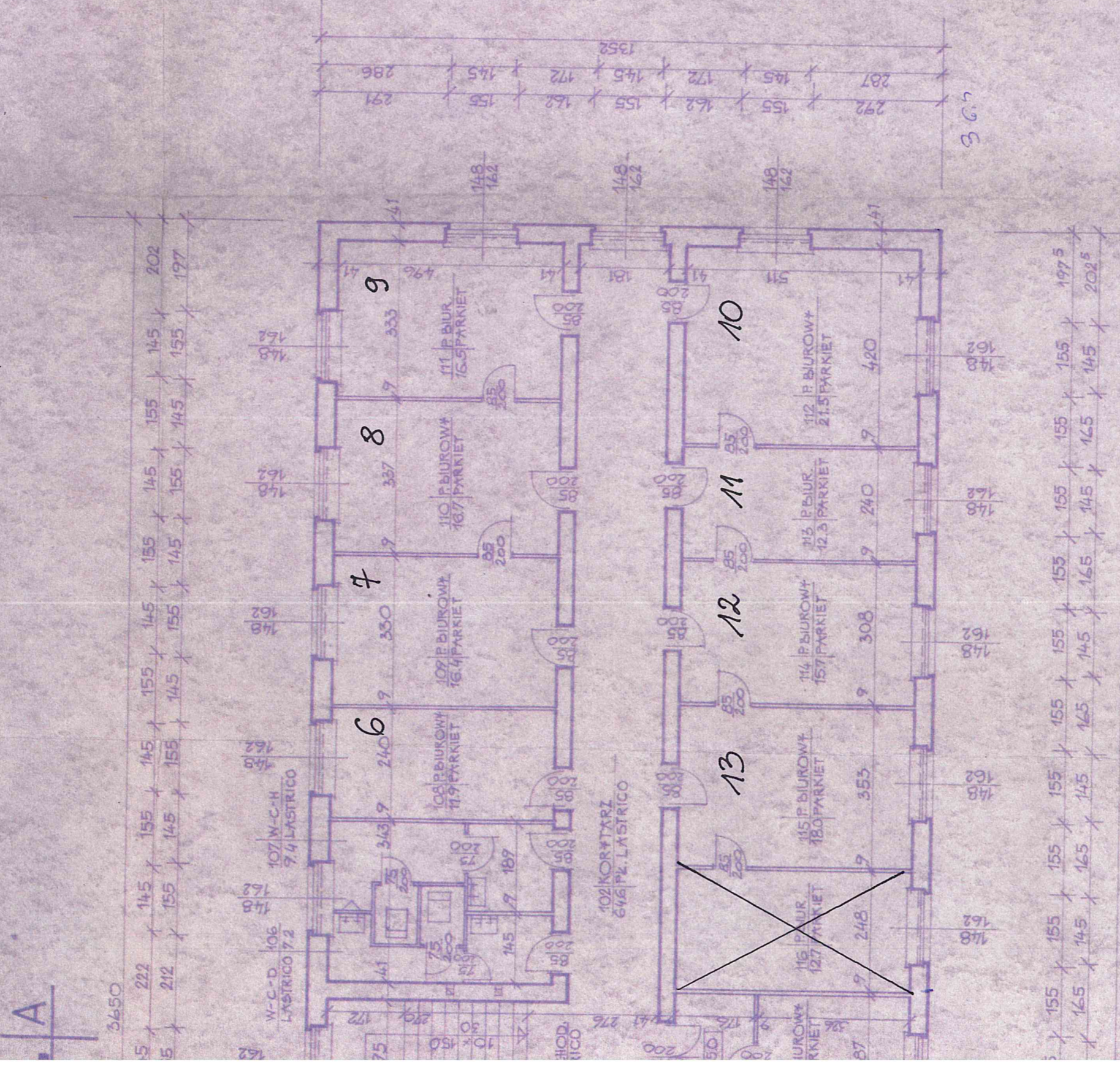
82/88
MIASTO I GMINA
UW ARCH. 3/7



1:100

I PIĘTRO

URZĄD
MIASTKA I
W KOLONIE
42/83
A
INV.
ARCH.
4/7



1 = 100